

Bleifreie X-Ray Detektoren

Catherine Schweinle

Albert-Ludwigs-Universität Freiburg

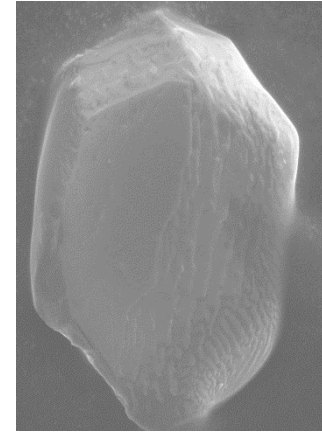
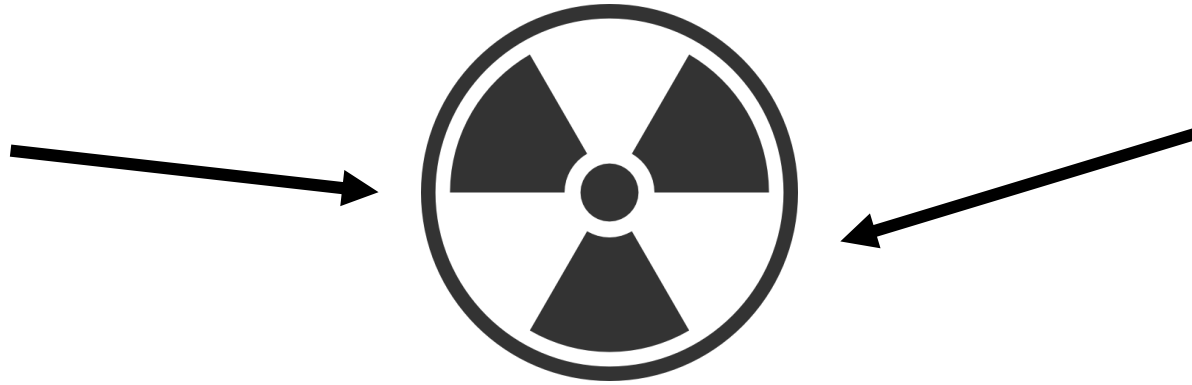


**UNI
FREIBURG**



<http://www.fusschirurgie-freiburg.de/Leistungsspektrum/Vorher-Nachher/>

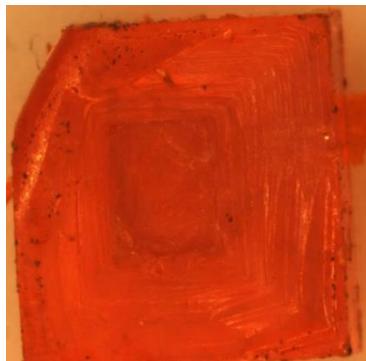
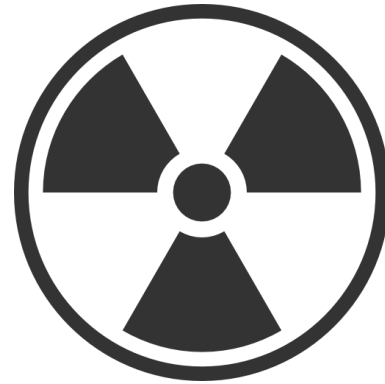
Medizin



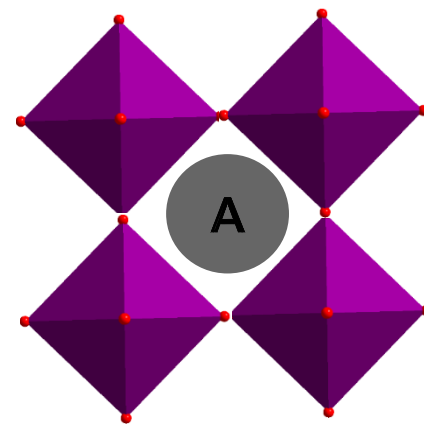
Analytik



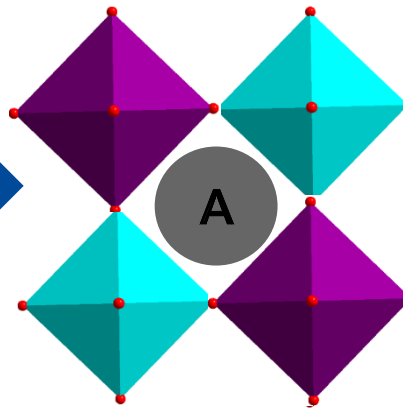
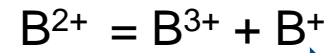
Strahlenschäden



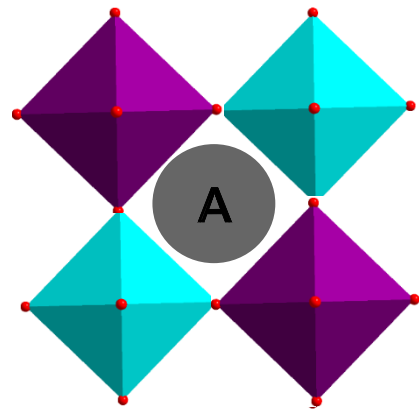
(MA)**Pb**Br₃



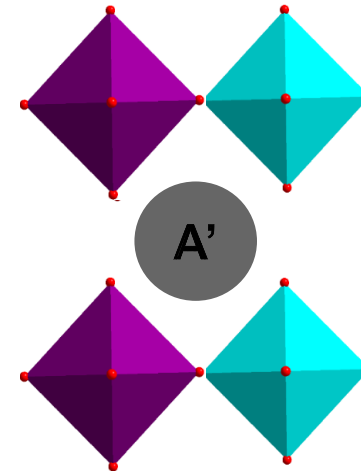
ABX₃
Perovskit



A₂BB'X₆
Doppelperovskit



A	B	B'	X
Cs	Ag	Eu	Cl
	Na		Br
	Etc.		I



A	B	B'	X
Diverse organische Kationen	Ag	Eu	Cl
	Na		Br
	etc		I



- Kristallzucht aus Lösungen
- Einkristallcharakterisierung
 - X-Ray
 - IR/Raman
 - UV/Vis

Catherine Schweinle
R 228
catherine.schweinle@ac.uni-freiburg.de